



# COMMUNITY EFFORTS IN SEDGWICK COUNTY

October 2023



## BioMedical School

Lead: Wichita State University, WSU Tech, and University of Kansas

*A new state-of-the-art facility in downtown Wichita to house Wichita State and WSU Tech's health professions programs as well as KU School of Medicine-Wichita and KU Pharmacy that will expand programs, improve patient outcomes, and engage new clinical trials.*

### Update

1. The design phase has begun
2. Construction projected to start 1st quarter of 2024



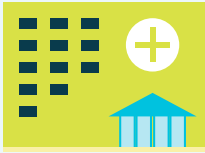
## COMCARE Crisis Center

Lead: Sedgwick County

*Sedgwick County is currently seeking a location in close proximity to the Bio-Medical School, anticipating engaging an architect soon to begin design work with the building to resemble the design of the Bio-Medical school. The funding for the expansion is supported by Sedgwick County. Development begins the first or second quarter of 2024. The expansion will include 10 Medical Detox beds in addition to the existing detox and sobering beds.*

CONTACT  
dawn.shepler@wichita.edu  
316-978-6541  
www.mhsacoalition.org





## State Behavioral Health Hospital

Lead: Kansas Dept. of Aging & Disability Services & Sedgwick County

*Developing programming and design of a regional state hospital, and working with partners to develop strategies for workforce development and talent recruitment.*

### *Update from State of Kansas and Sedgwick County*

The Governor issued an executive order appointing a 14 member Advisory Panel. They will provide advice on the need and location of a regional state psychiatric hospital, and how a state hospital would fit with existing services in Sedgwick County. To improve access and delivery, the panel will gather public input on existing resources, gaps in services and barriers to care. The 14 members have been appointed. The first meeting was held on October 9, 2023. These meetings will be open to the public.

Staff from KDADS and Sedgwick County are working with architects on the programmatic and space needed for 50+ beds, psychiatric hospital to develop a schematic design for the proposed building. This process should be complete by the end of October.

You can learn more about this effort from the following links:

- [State Mental Health Hospital ARPA-Funded Projects | Sedgwick County, Kansas](#)
- [South Central Regional Psychiatric Hospital Advisory Panel Meeting](#)



## City of Wichita HOME-ARP Projects

Lead: City of Wichita

*Contracting with a developer team and national consultant to work with the community and providers to identify site options for an effective service area for a navigation center, non-congregate housing and affordable housing, to be co-located with a 24/7/365 emergency shelter representing national best practices.*

### *Update*

1. The application for Additional HOME-ARP is being finalized.
2. New Market Tax Credit package is being assembled and the necessary banking contacts have been made.
3. PETRA has created a site selection matrix. They are working through the scoring matrix and adding additional sites. These will be presented to the City of Wichita by late-October.
4. Service partners are being engaged by PETRA to identify the requirements and need for the Multi-Agency Center (M.A.C). This engagement will continue through October and November.



## Homeless Task Force

Lead: Public Policy and Management Center, Wichita State University

*Between July and September of 2023, the Taskforce identified 5 areas of focus that required subgroup planning: Housing, Provider Coordination/Gap Analysis, Emergency Services, Community Engagement, and Funding. More than 55 individuals across sectors participated in the subgroup work. All subgroups apart from Funding, were tasked with developing a future vision for the area of focus and identify a six month plan to include action steps necessary to move the goals forward.*

The work identified within the subgroups:

1. The Provider Coordination/Gap Analysis and Emergency Services subgroups have identified six month action items that directly affect the implementation of behavioral health services.
2. The Housing subgroup includes a thorough inventory and assessment of housing needs, identifying legislative policy priorities, and outreach to landlords and property owners to build a two-directional information network.



## Other Updates (Mental Health & Substance Use, Homelessness, Housing etc.)

*Join us on October 19th at the Kansas Leadership Center as we discuss Community Gaps and Solutions, efforts in the community around homelessness, mental health and substance use. Key note speaker will be Julia Orlando, Director of the Bergen County Housing, Health and Human Services Center, with a panel of specialists to follow. Link to purchase tickets: [Community Gaps and Solutions](#): - Wichita Business Journal*

*The Mental Health and Substance Abuse Coalition welcomes you to join us on November 16th from 10-12 as their identified 2024 Legislative Policy Priorities are reviewed. For more information, please contact Executive Director, Dawn Shepler, at [dawn.shepler@wichita.edu](mailto:dawn.shepler@wichita.edu).*



# COMMUNITY EFFORTS IN SEDGWICK COUNTY TIMELINE

Efforts Timeline		Effort	Projected Timeline												(Lead) and Partners & Stakeholders				
			2023				2024				2025					2026			
			Q3	Q4	Q1	Q2	Q3	Q4	Q1	Q2	Q3	Q4	Q1	Q2		Q3	Q4		
State Behavioral Health Hospital	Oversight committee appointed through Governor's Executive Order																	(KDADS & Sedgwick County) Regional CMHCs, community hospitals, law enforcement, education	
	Design work																		
	Site selection; construction vendor selection																		
	Construction (completion 2025)																		
Project Hope	Create 2 Care Coordination Teams																	(City of Wichita) Law enforcement, Continuum of Care, Workforce Alliance, Goodwill, Healthcare, IACP, SafeNite, US State's Attorney's Office-District of Kansas, Breakthrough Club	
City of Wichita Home ARP 24/7 Homelessness Center	Site selection																	(City of Wichita)	
	Begin construction (completion TBD)																		
BioMed School	Construction (completion Fall 2026)																	(Wichita State, University of Kansas) Sedgwick County, City of Wichita	
COMCARE Community Crisis Center	Expanded Community Crisis Center																	(Sedgwick County) Continued collaboration with BioMed School	